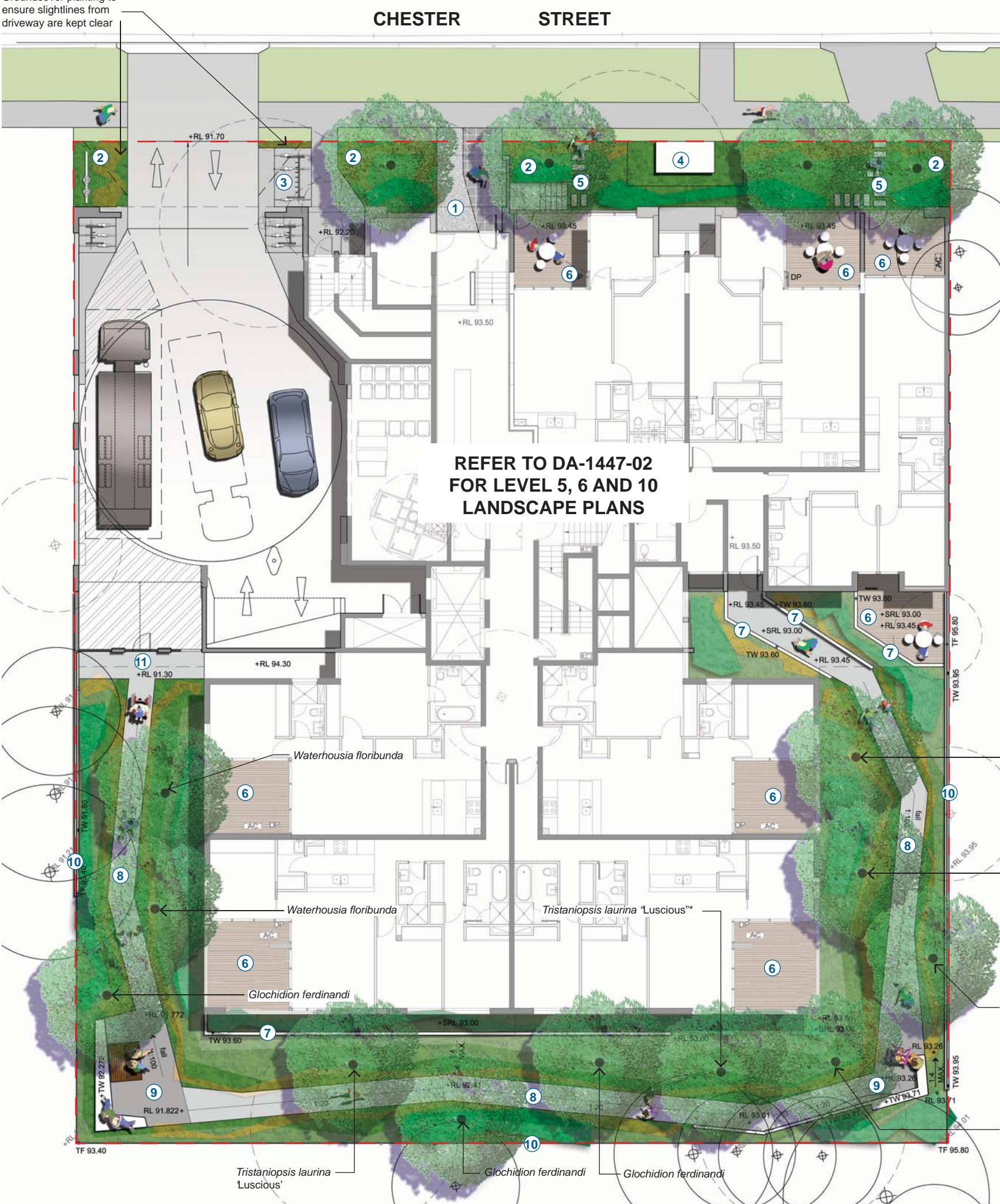


Groundcover planting to ensure sightlines from driveway are kept clear



NOTES

1. A paved area, with a two tone paving pattern, directs residents and visitors to the building entry.
2. Shrub, groundcover and tree planting creates a green edge to the development along Chester Street.
3. Visitor bike parking located between the basement egress path and driveway.
4. Substation.
5. Stepping stones provide access from Chester Street to private outdoor spaces.
6. Private outdoor spaces with privacy screens to external edges.
7. Low walls create a raised planter above the basement slab for lush shade tolerant planting.
8. A footpath meanders through the communal garden, between areas of dense low maintenance ornamental planting and small trees.
9. Widened areas of path with a simple bench seat or picnic table create rest areas, surrounded by lush planting.
10. Boundary fence set on retaining walls where required
11. Access from the private communal garden to the building service area and connection through to Chester Street.

LEGEND

- Project boundary
- Existing levels
- Proposed levels
- Top of wall levels
- Existing trees on adjacent properties
- Existing trees to be removed
- Proposed tree planting
Refer to indicative plant schedule
- Proposed shrubs & groundcovers
refer to indicative plant schedule
- Concrete retaining walls
- Concrete seat walls
- Two tones concrete unit pavers
- Concrete footpath
- Timber decking
- Stepping stone
- Picnic setting

Sturt Noble Associates

Suite 91, L5, 330 Wattle St
Ultimo NSW 2007
T. 02 9211 3744
W. www.sturnoble.com.au
landscape architecture
environmental & urban design

PROJECT
**RESIDENTIAL 2-4 CHESTER STREET,
EPPING**

CLIENT
B1 DEVELOPMENT GROUP

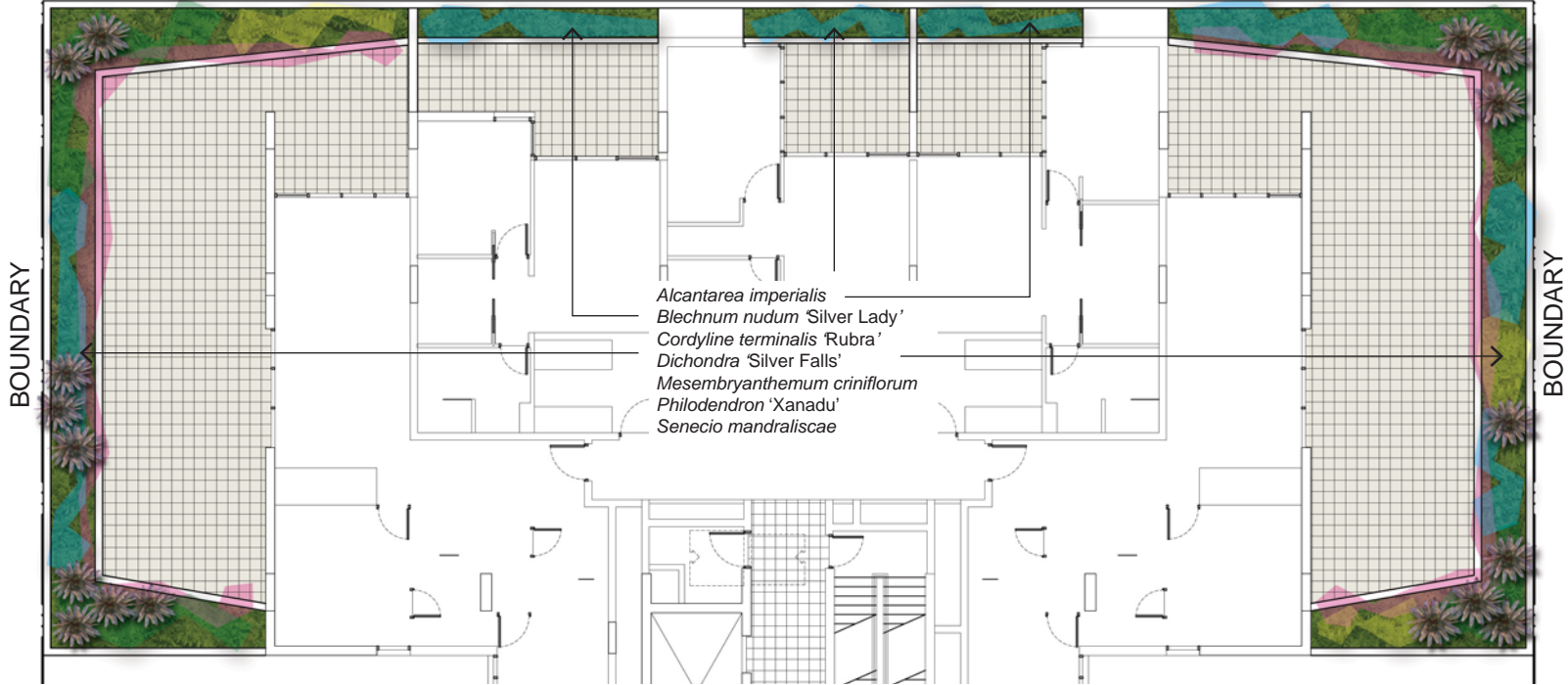
DRAWING
GROUND FLOOR LANDSCAPE PLAN

DRAWING No. **DA-1447-01** ISSUE **E** DRAWN **jw/bx** DATE **11.06.2015**

ACN: 164 245 514 ABN: 99 164 245 514

THIS DRAWING SHOULD BE READ IN CONJUNCTION WITH ALL RELEVANT CONTRACTS, SPECIFICATIONS, REPORTS AND DRAWINGS. COPYRIGHT OF THIS DRAWINGS IS VESTED IN STURT NOBLE ASSOCIATES PTY LTD.

Scale 1:200@A3

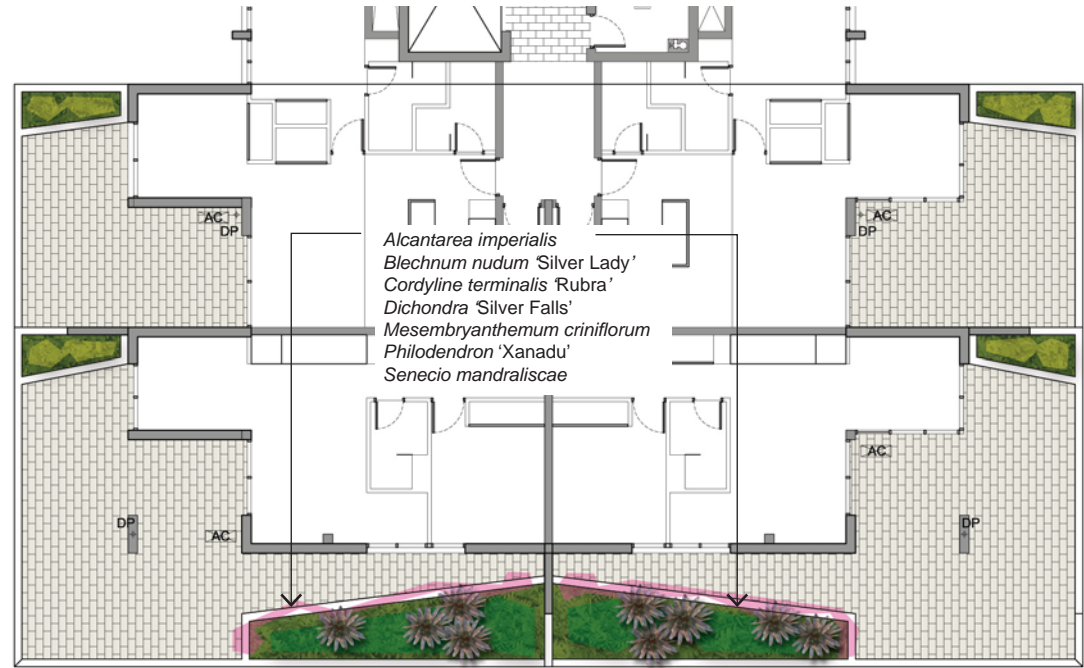


LEVEL 5 LANDSCAPE PLAN

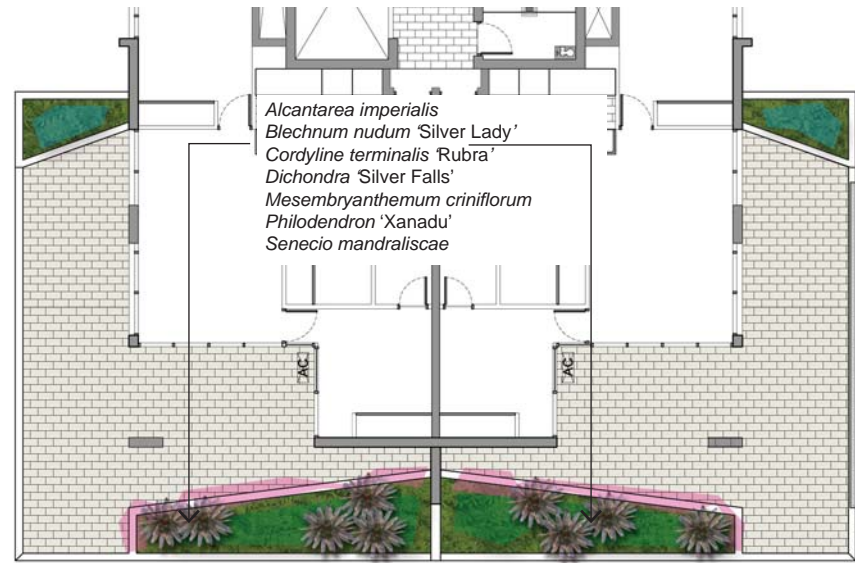
INDICATIVE PLANT SCHEDULE

BOTANICAL NAME	COMMON NAME	POT SIZE	SPACING
TREES			
<i>Diploglottis australis</i>	Native Tamarind	200L	a.s.
<i>Tristanopsis laurina</i> 'Luscious'	Watergum	100L	a.s.
<i>Waterhousia floribunda</i>	Weeping Lilly Pilly	100L	a.s.
<i>Glochidion ferdinandi</i>	Cheese Tree	100L	a.s.
SHRUBS & GROUNDCOVERS			
<i>Alpinia caerulea</i>	Native Ginger	25L	500mm
<i>Ajuga reptans</i>	Blue bugle	150mm	300mm
<i>Alcantarea imperialis</i>	Imperial Bromeliad	25L	500mm
<i>Anemone</i> sp.	Anemone	150mm	300mm
<i>Beschorneria yuccoides</i>	Blue Flax Lily	25L	1m
<i>Blechnum nudum</i> 'Silver Lady'	Silver Lady	150mm	400mm
<i>Bromeliad neoregelia</i>	Bromeliad	200mm	400mm
<i>Carex appressa</i>	Tall Sedge	150mm	300mm
<i>Cordyline</i> 'Red Sensation'	Red Cabbage Tree	25L	700mm

BOTANICAL NAME	COMMON NAME	POT SIZE	SPACING
<i>Cordyline stricta</i>	Narrow Palm Lily	25L	700mm
<i>Cordyline terminalis</i> 'Rubra'	Cordyline Rubra	25L	700mm
<i>Ctenanthe</i> 'Grey Star'	Foliage Plant	25L	400mm
<i>Dichondra</i> 'Silver Falls'	Silver Dichondra	150mm	300mm
<i>Hibbertia scandens</i>	Snake Vine	150mm	300mm
<i>Liriope</i> 'Evergreen Giant'	Evergreen Giant	150mm	300mm
<i>Lomandra</i> 'Tanika'	Tanika	150mm	300mm
<i>Mesembryanthemum criniflorum</i>	Livingstone Daisy	150mm	300mm
<i>Nandina domestica</i>	Nandina	200mm	500mm
<i>Philodendron</i> 'Xanadu'	Xanadu	200mm	400mm
<i>Raphiolepis indica</i>	Indian Hawthorn	25L	600mm
<i>Russelia equisetiformis</i>	Firecracker Plant	150mm	300mm
<i>Senecio mandraliscae</i>	Blue Chalk Sticks	150mm	300mm
<i>Viburnum odoratissimum</i> 'Emerald Lustre'	Emerald Lustre Viburnum	200mm	800mm
<i>Viola hederacea</i>	Native Wood Violet	150mm	300mm



LEVEL 6 LANDSCAPE PLAN



LEVEL 10 LANDSCAPE PLAN

INDICATIVE MATERIALS AND PLANTING IMAGES



Suite 91, L5, 330 Wattle St
Ultimo NSW 2007
T. 02 9211 3744
W. www.sturnoble.com.au
landscape architecture
environmental & urban design

PROJECT

RESIDENTIAL 2-4 CHESTER STREET,
EPPING

CLIENT

B1 DEVELOPMENT GROUP

DRAWING

LEVEL 5, 6 & 10
LANDSCAPE PLANS

DRAWING No. DA-1447-02

ISSUE C

DRAWN jw/bx

DATE 08.04.2015

0 1 5m
Scale 1:200@A3

ACN: 164 245 514

ABN: 99 164 245 514

THIS DRAWING SHOULD BE READ IN CONJUNCTION WITH ALL RELEVANT CONTRACTS, SPECIFICATIONS, REPORTS AND DRAWINGS. COPYRIGHT OF THIS DRAWINGS IS VESTED IN STURT NOBLE ASSOCIATES PTY LTD.